

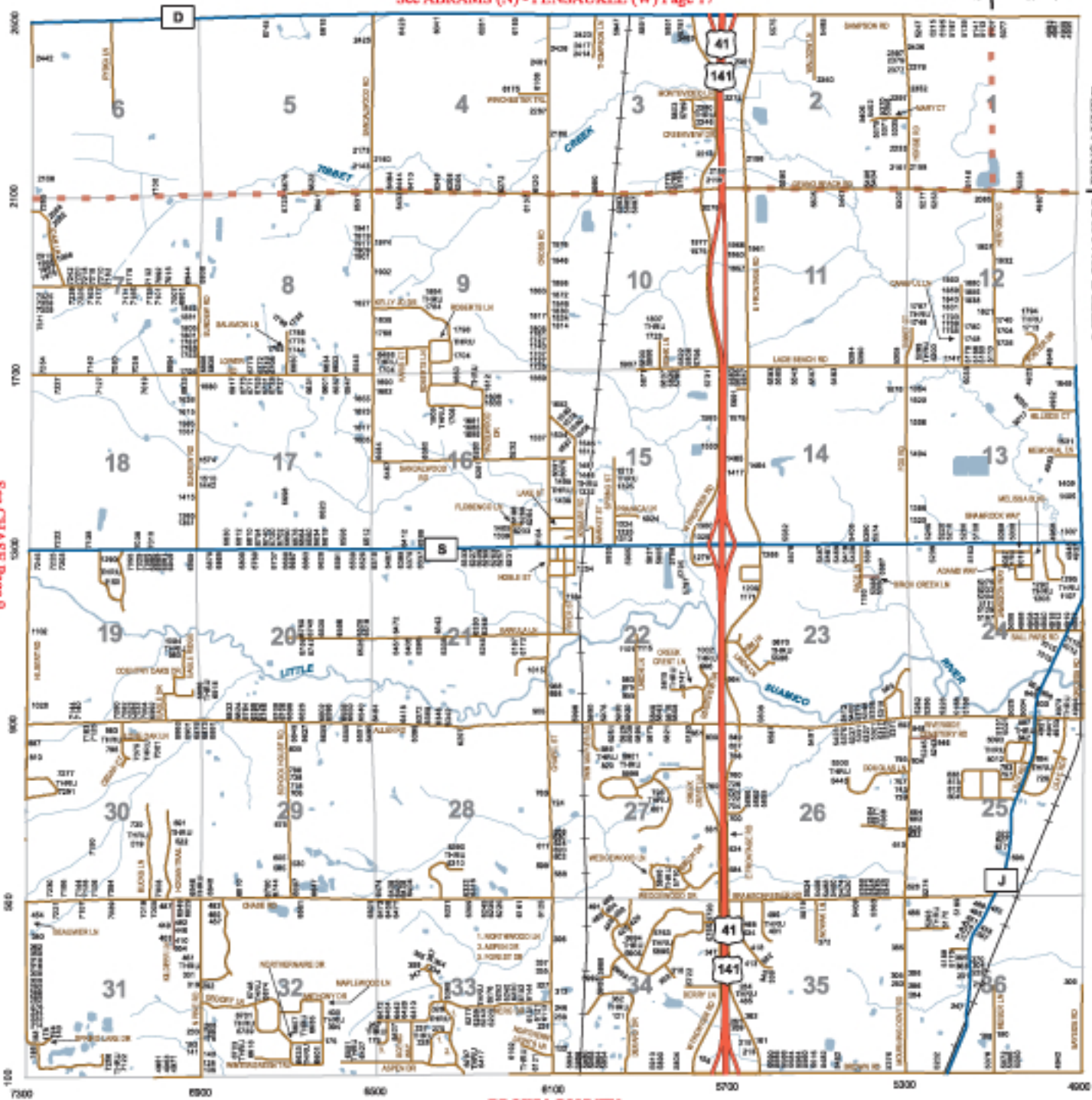
LITTLE SUAMICO (W) ABRAMS (S)

T.26N.-R.20E.



See ABRAMS (N) - PENSUKEE (W) Page 17

ABRAMS | PENSUKEE



LITTLE SUAMICO | PENSUKEE

See LITTLE SUAMICO (E) - PENSUKEE (S) Page 13

See CHASE Page 9

BROWN COUNTY